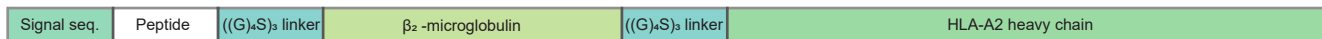
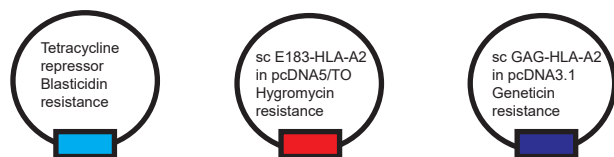


A



B



C

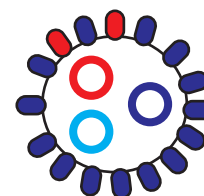
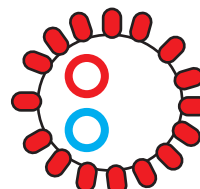
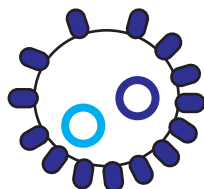
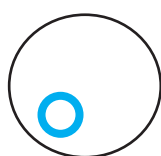
Untransfected
T-REx CHO

T-REx CHO
+ sc GAG-HLA-A2

T-REx CHO
+ sc E183-HLA-A2
no tetracycline

T-REx CHO
+ sc E183-HLA-A2
+ tetracycline

T-REx CHO
+ sc E183-HLA-A2
+ sc GAG-HLA-A2
no tetracycline

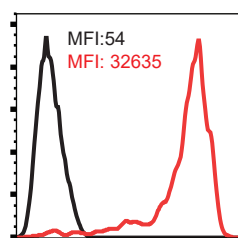


Very low, "leaky"
sc E183-HLA-A2
expression
+ high, constitutive
sc GAG-HLA-A2
expression

D

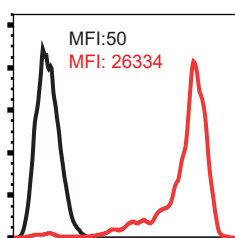
T-REx CHO
+ sc E183-HLA-A2
no tetracycline
(low "leaky" expression)

T-REx CHO
+ sc GAG-HLA-A2



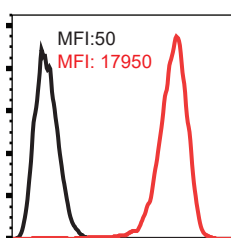
Untransfected T-REx CHO

T-REx CHO
+ sc E183-HLA-A2
+ sc GAG-HLA-A2
no tetracycline



Untransfected T-REx CHO

T-REx CHO
+ sc E183-HLA-A2
+ tetracycline

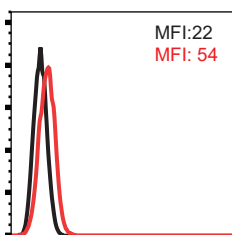


total HLA-A2 staining

E

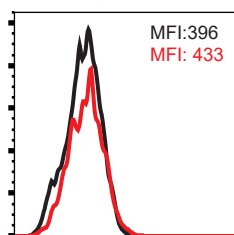
Untransfected T-REx CHO

T-REx CHO
+ sc GAG-HLA-A2



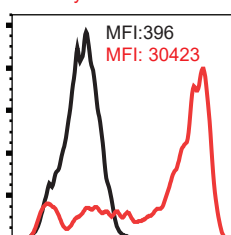
T-REx CHO
+ sc E183-HLA-A2
no tetracycline

T-REx CHO
+ sc E183-HLA-A2
+ sc GAG-HLA-A2
no tetracycline



T-REx CHO
+ sc E183-HLA-A2
no tetracycline

T-REx CHO
+ sc E183-HLA-A2
+ tetracycline



TCR-like antibody anti-E183-HLA-A2 staining